

Serenity



Approximate Design Area 13.4in x 7.4in (34cm x 19cm)

This Blackwork/Cross stitch design contains a chart and instructions
and can be stitched on 14 count Aida or 28 count Evenweave





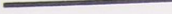

Published by Catkin Embroidery Designs
31 Cleeve Road, Knowle, Bristol BS4 2JR
Tel: (0117) 971 5802 Fax (0117) 914 7160

Serenity




Black	DMC
Pewter Grey vy dk	310
Steel Grey dk	3799
Tangerine Blend	414
Pewter Grey vy dk + Black	Gold 7
	3799 + 310

Backstitch in:

	Black	310
	Pewter Grey vy dk	3799
	Steel Grey dk	414
	Pearl Grey	415

French Knots in:

	Black	310
---	-------	-----

Blending Filament

The blending filaments used is Gold 7 in the Madeira Glissengloss range but any gold blending filament can be used. Please use 2 strands of the thread in the design for cross-stitches and backstitch.

Additional Information

The colours used in this design are as follows :-

310	Black
3799.....	Dark Grey
415.....	Light Grey.



Catkin Embroidery Designs Blackwork Instructions

General

In order to maintain an even tension it is advisable to use an embroidery frame or hoop. If you are leaving your work for some time, remember to release the fabric from the frame to prevent it being marked. In Blackwork it is essential to avoid carrying threads a long distance across the back of the fabric as it shows through the completed work.

Getting Started

Bind, tape or zig-zag raw edges of material to prevent fraying. Fold the material into four, horizontally and vertically and pinch centre to mark design-starting point. Sort and identify threads. Daylight is best for this. The six stranded thread can be separated into 1 or 2 strands as required. It is inadvisable to use lengths of more than 20 inches.

Start working your design from the middle so that it is centred on your material. Do not start with a knot. Blackwork consists of an outline usually in 2 strands, with an infill pattern that is usually in 1 strand. This is only a general rule and specific instructions for this design can be found in the design notes. It is a matter of personal preference whether the outline or the infill pattern is stitched first. For those who prefer to stitch the outline first it will be necessary to find the centre of the fabric and count squares (Aida) or threads (Evenweave) outwards to reach a starting point.

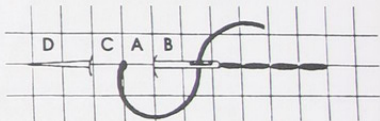
Please remember to weave loose threads into the back of the finished work to prevent them showing through the design when framed. Since Blackwork has so many areas of blank fabric incorporated into the design there is more danger of this happening than in any other embroidery techniques.

Stitches

Note that the stitches below are illustrated on 14 count Aida, where the squares can be easily seen on the fabric. In the case of 28 count Evenweave or Jobelan remember to stitch over 2 x 2 threads.

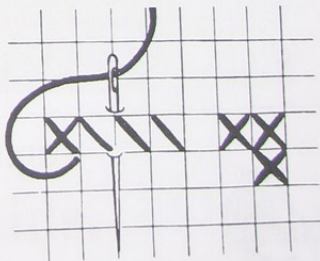
Back stitch

Represented by lines on the chart and can be stitched horizontally, vertically or diagonally. Bring needle up at **A**, down at **B**, up at **C**, down at **A** and up at **D**. Continue until outline is completed.



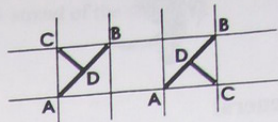
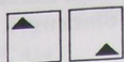
Cross stitch

The colour used is indicated by the symbol in the square which can be identified from the Chart Key. The direction these are worked in is not important PROVIDED all the top stitches are worked in the same direction i.e. left to right or right to left.



1/2 Cross-stitches

If the symbol is in the corner of the square with a diagonal line across the square, it indicates a half stitch. Bring the needle up at corner **A** and then diagonally down at the opposite corner **B**. Next bring the needle up at **C** and down at **D** in the centre of the square.



Beads

Where a design uses beads, these are attached by a diagonal stitch through the bead in a single strand of toning cotton, using a beading needle or crewel No. 8.

Special Aftercare Instructions

Natural oils from the skin may discolour the fabric after a time under glass. It is recommended that the work be gently hand washed in luke-warm water, using a mild detergent (non-biological and bleach free) rinsed well before excess water is squeezed out onto a towel. Whilst damp, iron face down on a thick towel. This prevents the stitching being flattened. Metallic threads and beads should have work covered with a cloth before being ironed face down.

We hope you enjoy working this design. A catalogue of other designs is available from the address below.



Catkin Designs

31 Cleeve Road,
Knowle,
BRISTOL BS4 2JR.

Serenity

Approximate Design Size 13.4 ins x 7.4 ins (34cms x 19cms)

This design can be stitched on 14 count aida or 27/28 count evenweave over 2 x 2 threads and is stitched in Blackwork (worked in backstich or stab- stitch) and cross-stitch.

The 4 small arrows, one appearing at the edge of each of 4 pages of the chart, are to enable you to centre the design on your fabric. Please note that to make moving from 1 page of the chart to another easier there is a **2 line shaded overlap** on pages 2-4, where the adjoining 2 lines from the previous page are duplicated

General

In the Blackwork part of the design the thicker lines, usually outlines are stitched in 2 strands of the appropriate colour, the thinner lines e.g. the infill patterns are stitched in 1 strand. Where darker lines appear over the infill pattern these should be put in after the underlying infill pattern is completed.

Cross-stitches are in 2 strands of the thread shown in the key. Where a half-stitch is used, a diagonal line is shown across the square with the appropriate symbol behind it.

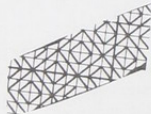
Where a shade other than Black is used in the Blackwork part of this design, instructions for each section are given below

Lady

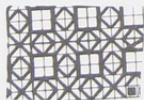
The infill pattern of her **kimono** is in 1 strand of DMC 310, some of which patterns include cross-stitch in DMC 310 or Gold 7.



The infill pattern of her **sleeve and collar** is in 1 strand of DMC 415.



Her **obi or belt** is outlined in 2 strands of DMC 310 and the infill pattern is in 1 strand of DMC 3799

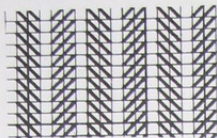


Her **underdress** infill is stitched in 1 strand of DMC 3799

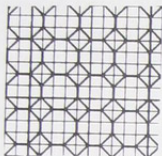


The Little Girl

The infill pattern of her **dress** is in 1 strand of DMC 3799



Her **sash or obi** outlined as is the rest of her in DMC 310 has an infill pattern of DMC 415



Leaves and Branches

The leaves are in 1 strand of DMC 3799 and the branches in 2 strands.

Copyright Notice

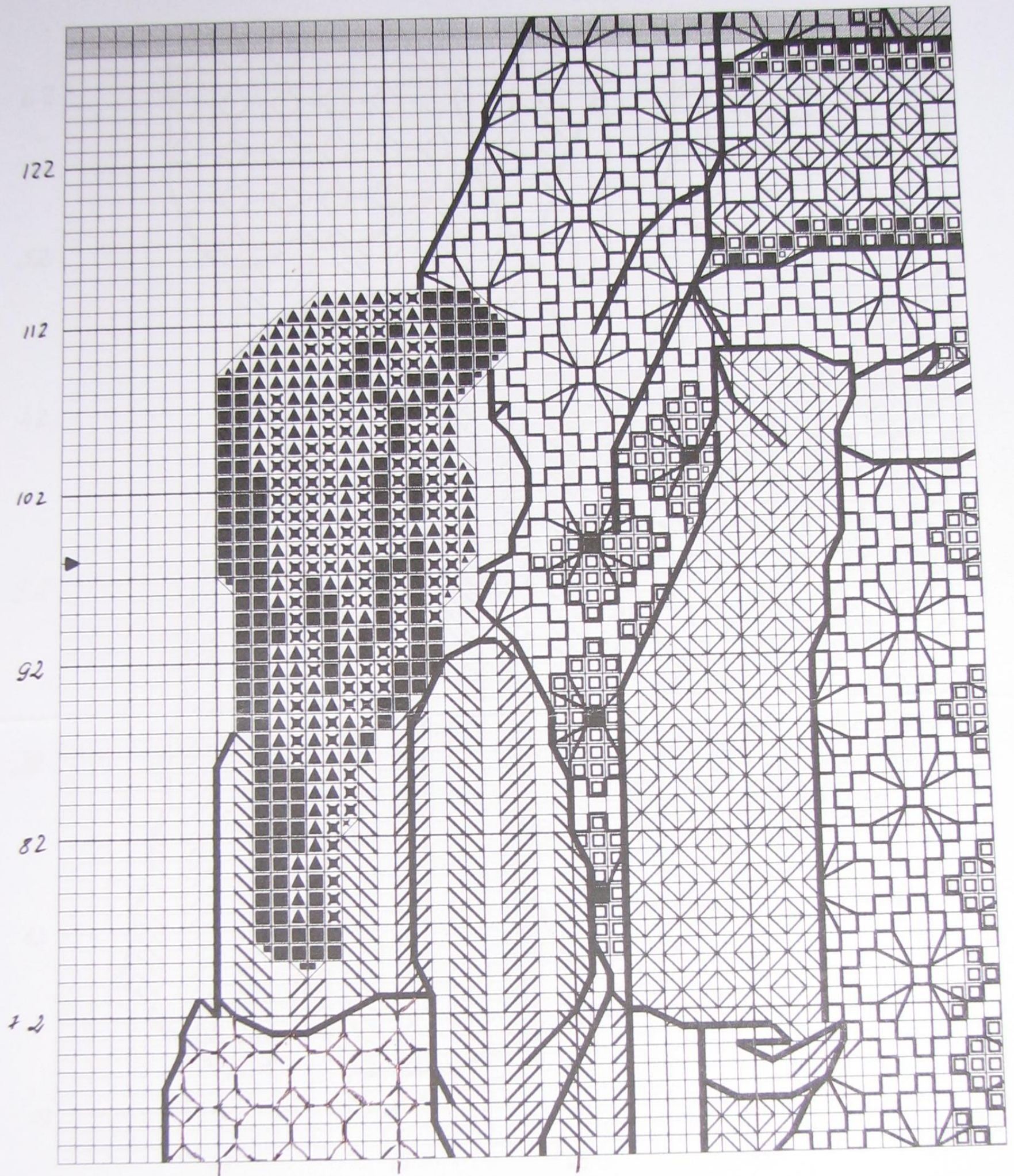
All printed matter in this pack is the copyright of Catkin Embroidery Designs 2002 and may not be copied by any means or stored in any retrieval system without the express written permission of the publisher.



Catkin Embroidery Designs

Serenity.

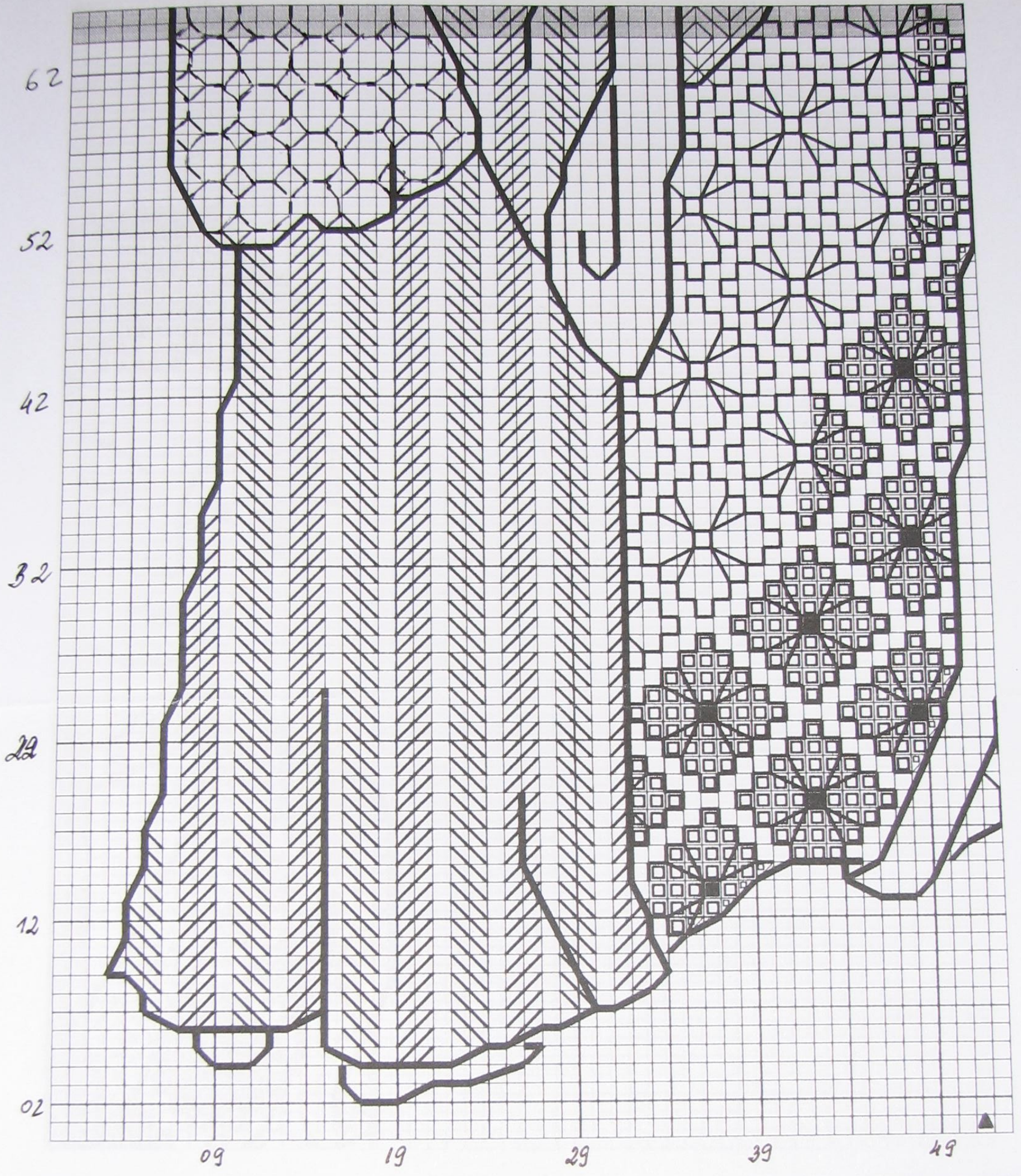




Catkin Embroidery Designs

Serenity®

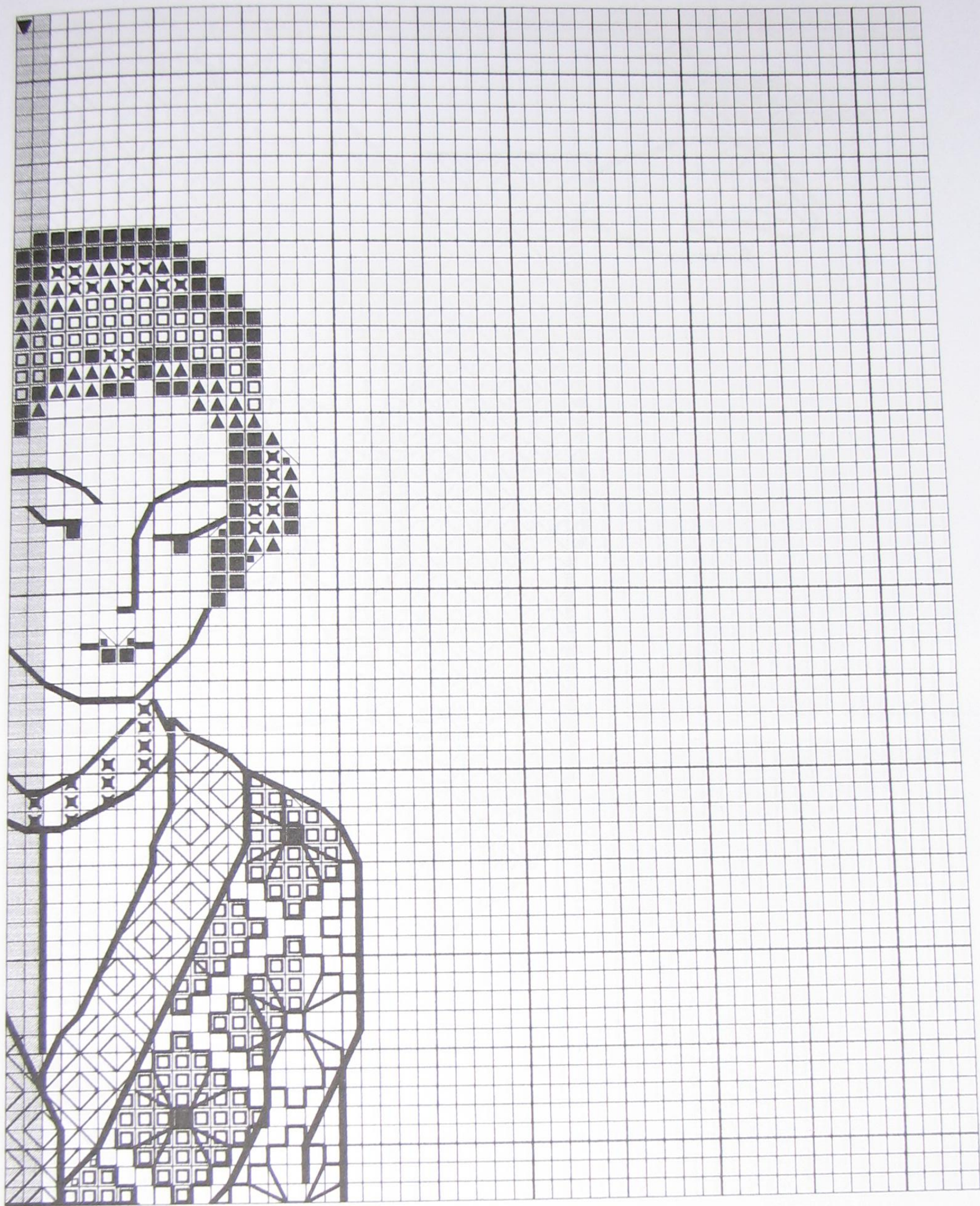




Catkin Embroidery Designs

Serenity®

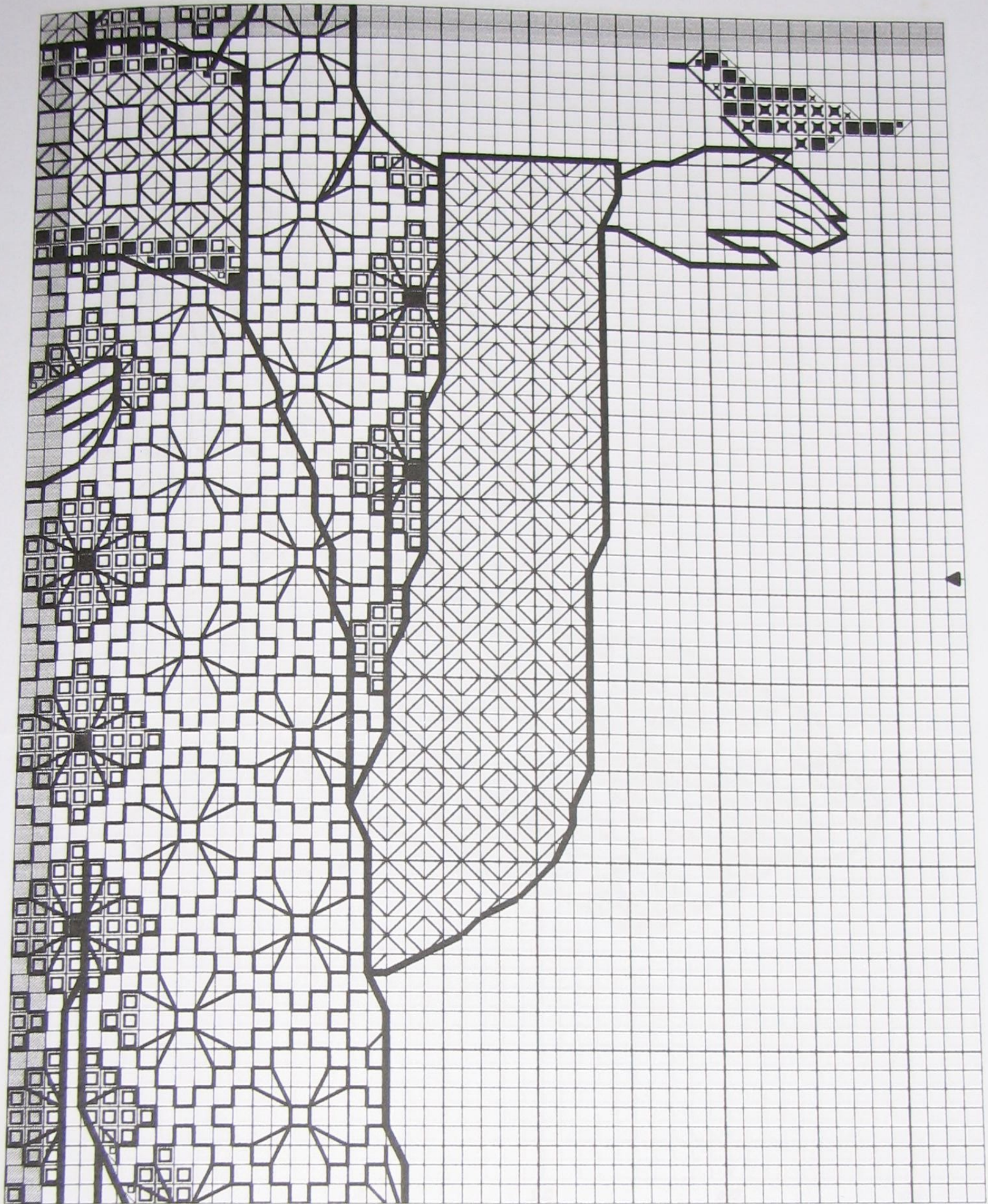




Catkin Embroidery Designs

Serenity®



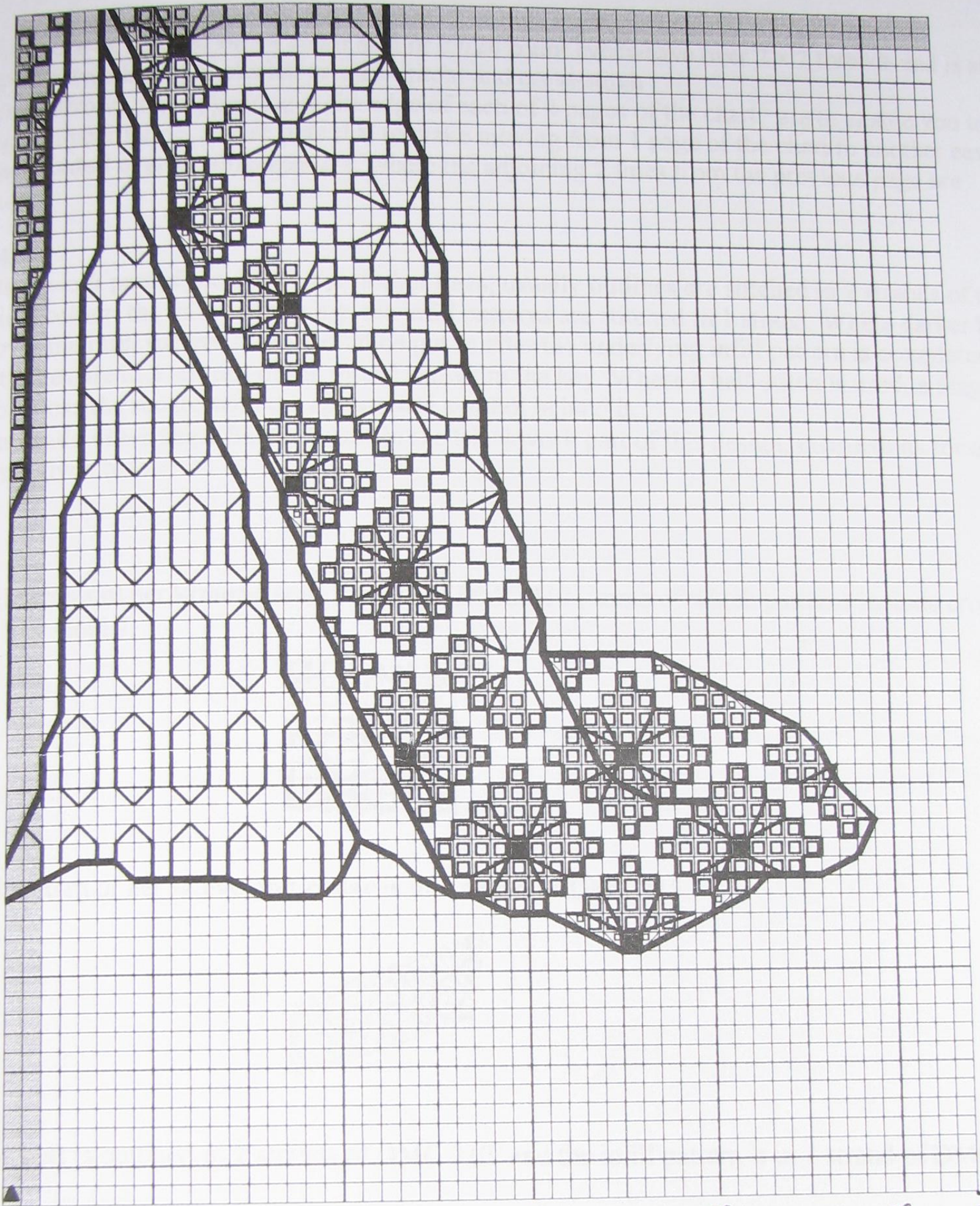


Catkin Embroidery Designs



Serenity[®]





59 69 79 89 99 103

Catkin Embroidery Designs

Serenity®

