

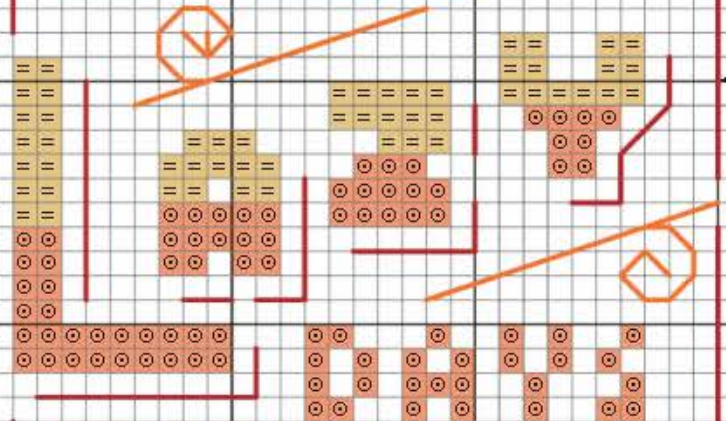
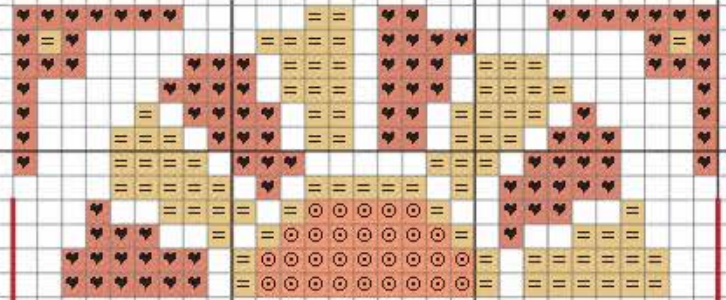
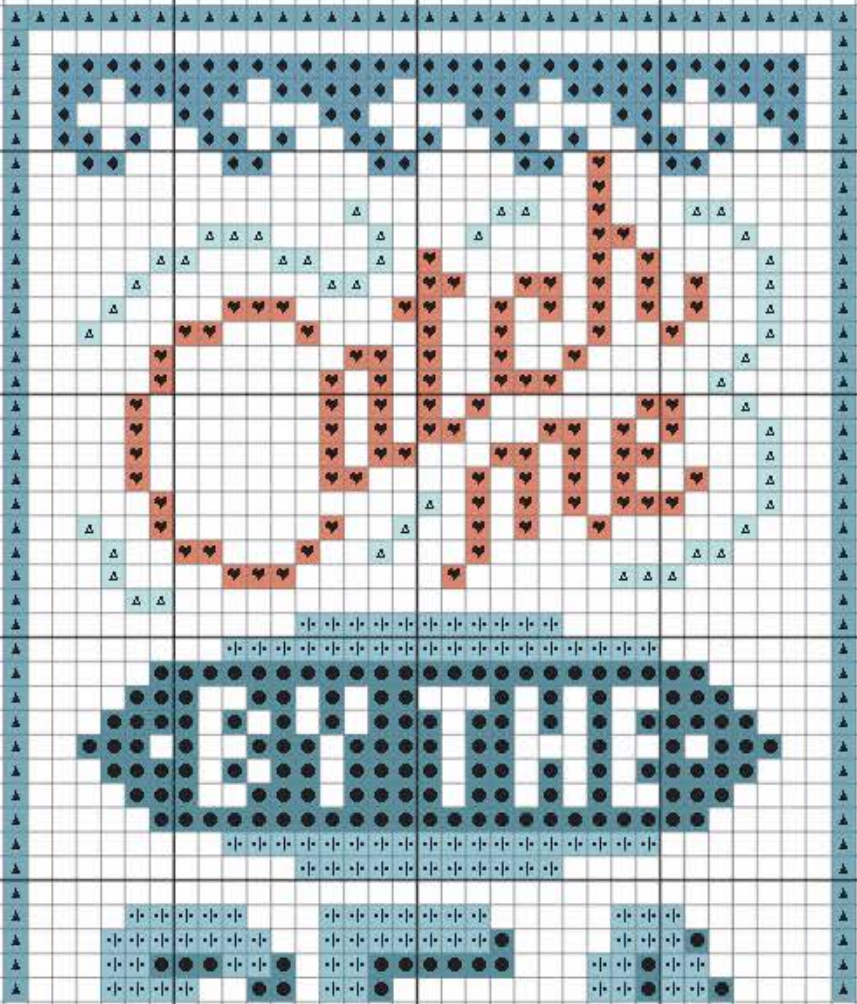
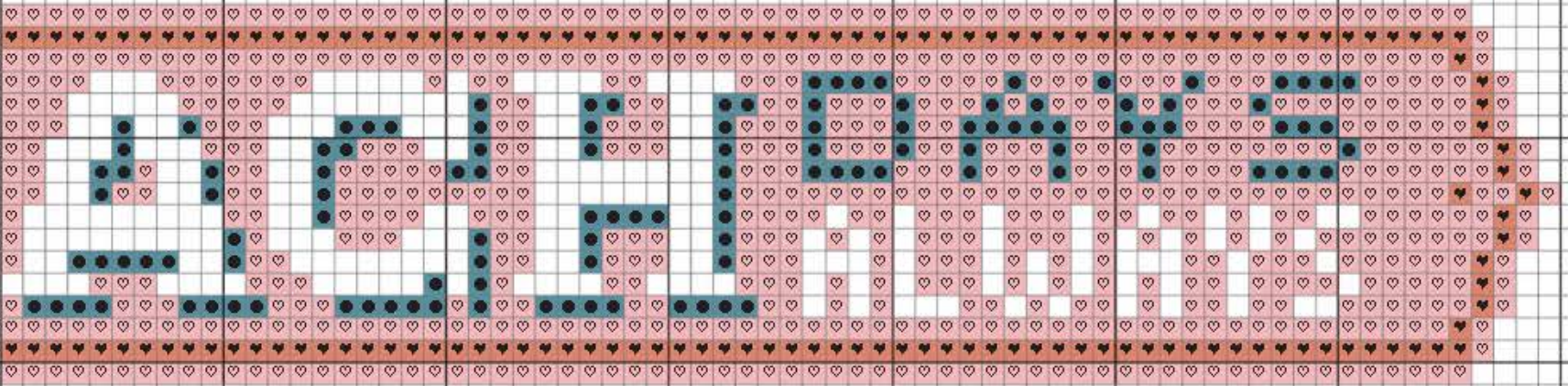
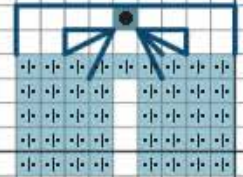
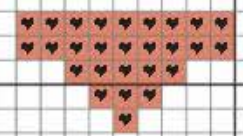
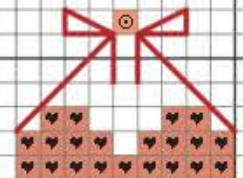
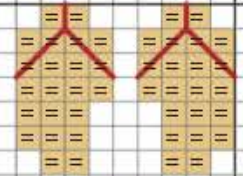
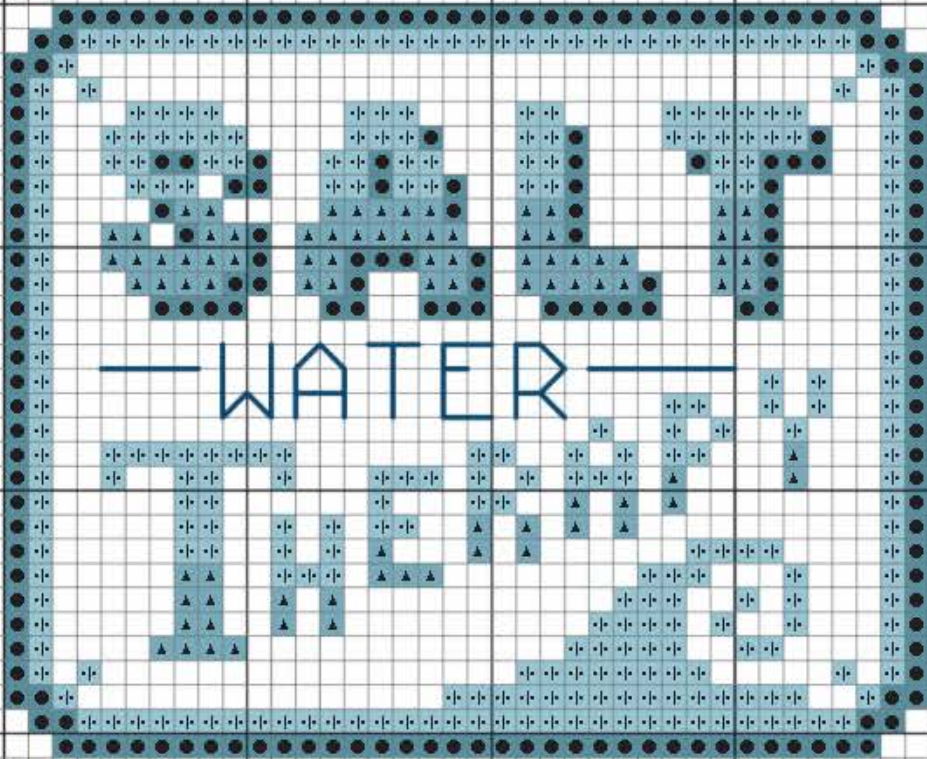
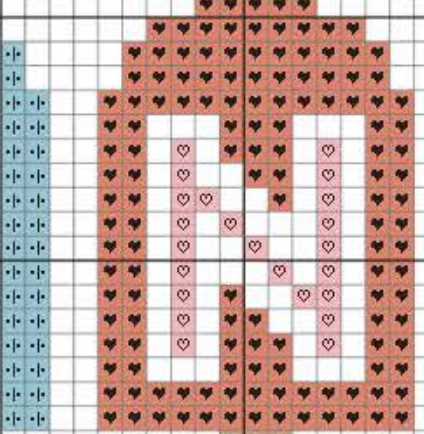
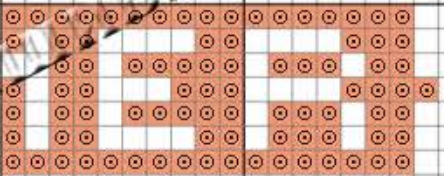
ВЫШИВКА





Беларусь 2010

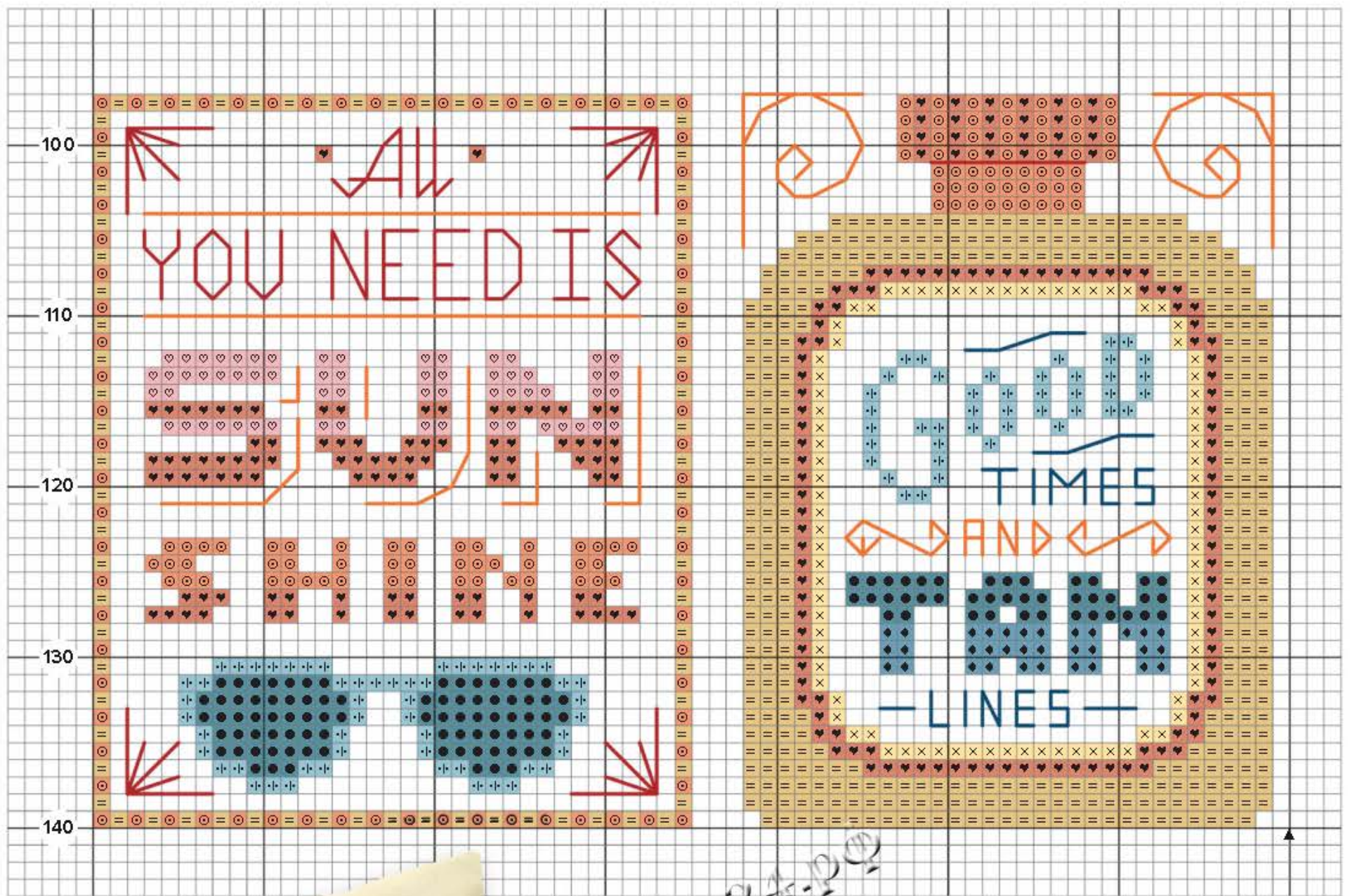
70 80 90 100 110 120 130 140



Сцяг







## Materials

- DMC Iridescent Cream 14 count aida, 50x50cm (19½x19½in)
  - Stranded cotton as listed in the key
  - Size 24 tapestry needle
  - Backing fabric, 43x43cm (17x17in)
  - Cushion pad, 40.5x40.5cm (16x16in)
- Materials available from [www.willowfabrics.com](http://www.willowfabrics.com)

Designed by: Emma Congdon Stitch count: 140 high x 140 wide

Design size: 25.5x25.5cm (10x10in) Stitch time: 52 hours

This design was stitched on 14 count aida fabric.

Use individual sections of this design to make quick summer cards or mini pictures!

	DMC	Anchor	Madeira
<b>Cross stitch in two strands</b>			
⊗ ⊗	436	1045	2011
▲ ▲	518	1039	1106
⋄ ⋄	519	1038	1105
♥ ♥	720	326	309
⊠ ⊠	741	304	201
× ×	744	301	112
△ △	747	158	1104
♡ ♡	761	024	404
◎ ◎	970	316	204
◆ ◆	3760	169	1012

	DMC	Anchor	Madeira
<b>Cross stitch in two strands</b>			
● ●	3765	169	2506
= =	3821	305	2510
~ ~	3823	386	2512
◇ ◇	3854	313	2301
<b>Backstitch in one strand</b>			
—	740	316	202
words, details			
—	900	333	208
words, details			
—	3765	169	2506
words, details			





CrossStitcher © Emma Congdon

