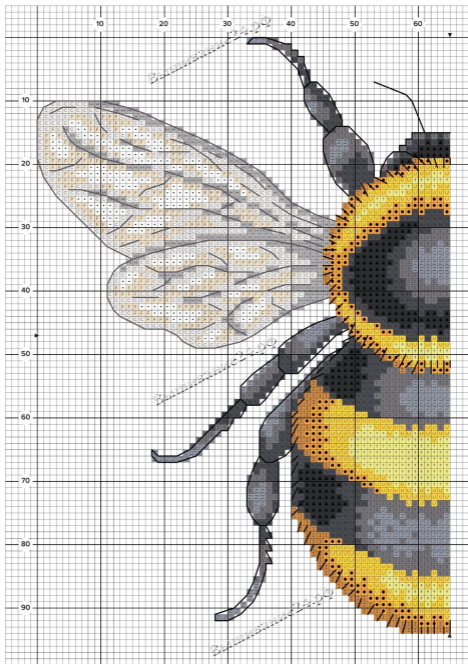


# CREATE A BUZZ



70

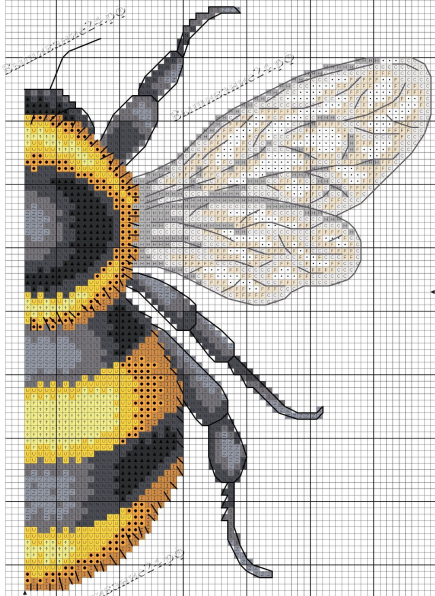
80

90

100

110

120





Designed by: Susan Bates Stitch count: 94 high x 129 wide  
Design size: 16x23cm (6¼x9in) Stitch time: 50 hours

This design was stitched on 28 count linen over two threads of fabric.

## Make a... cushion

### Step 1

**COMPLETE** the stitching then cut the fabric to 40.5x40.5cm (16x16in), the same size as your backing fabric, with the design in the centre.

### Step 2

**PLACE** the cushion front right-sides together with the backing fabric. Pin, then machine stitch around the edge with a 1.25cm (½in) seam allowance, leaving a gap for turning.

### Step 3

**TURN** to the right side, insert the cushion pad, and then sew up the gap with small, neat stitches.

*Condition Light Effects threads with beeswax to help them handle more smoothly*

## Materials

• Wiegant Opalescent Snow  
• 28 count Cashel, ref. 3281/1711;  
50x50cm (19½x19½in)

- Stranded cotton as listed in the key
- Size 24 tapestry needle
- Backing fabric: 40.5x40.5cm (16x16in)
- Cushion pad: 38x38cm (15x15in)

Materials available from [www.willowfabrics.com](http://www.willowfabrics.com)

	DMC	Anchor	Madelra
Cross stitch in two strands			
<b>A</b>	310	403	black
<b>S</b>	317	400	1714
<b>Z</b>	318	399	1802
<b>↑</b>	445	288	103
<b>I</b>	783	306	2211
<b>●</b>	972	298	107
<b>U</b>	973	290	105
<b>N</b>	3799	236	1713
Half cross stitch in two strands			
<b>H</b>	002	398	1803
<b>F</b>	712	926	2101
<b>C</b>	E168 Light Effects		
<b>□</b>	E5200 Light Effects		
Backstitch in one strand			
<b>—</b>	310	403	black
<b>—</b>	317	400	1714
	white		