

# Confrontation by Kayomi

☒	DMC 310 Black
◻	DMC 500 Very Dark Blue Green
◉	DMC 820 Very Dark Royal Blue
+	DMC 936 Very Dark Avocado Green
■	DMC 501 Dark Blue Green
▴	DMC 3031 Very Dark Mocha Brown
●	DMC 3781 Dark Mocha Brown
⊗	DMC 924 Very Dark Gray Green
◇	DMC 3799 Very Dark Pewter Gray
▾	DMC 3807 Cornflower Blue
⏪	DMC 798 Dark Delft Blue
◉	DMC 3346 Hunter Green
⊕	DMC 996 Medium Electric Blue
◻	DMC 334 Medium Baby Blue
▴	DMC 799 Medium Delft Blue
↑	DMC 435 Very Light Brown
△	DMC 869 Very Dark Hazelnut Brown
⊗	DMC 610 Dark Drab Brown
▾	DMC 783 Medium Topaz
⊗	DMC 3829 Very Dark Old Gold
⊥	DMC 3012 Medium Khaki Green
▾	DMC 734 Light Olive Green
⊗	DMC 725 Topaz
■	DMC 809 Delft Blue
◁	DMC 793 Medium Cornflower Blue
◻	DMC 3755 Baby Blue
◻	DMC 794 Light Cornflower Blue
+	DMC 3840 Light Lavender Blue
▣	DMC 3782 Light Mocha Brown
◻	DMC 834 Very Light Golden Olive
⋈	DMC 744 Pale Yellow
▨	DMC 3024 Very Light Brown Gray
≡	DMC 827 Very Light Blue
◎	DMC 3865 Winter White

\* To work out the size of the finished article, take the number of stitches and divide it by the count of your fabric (e.g 14,16,18 count aida etc) to get the size in inches. Times it by 2.5 to get centimetres.

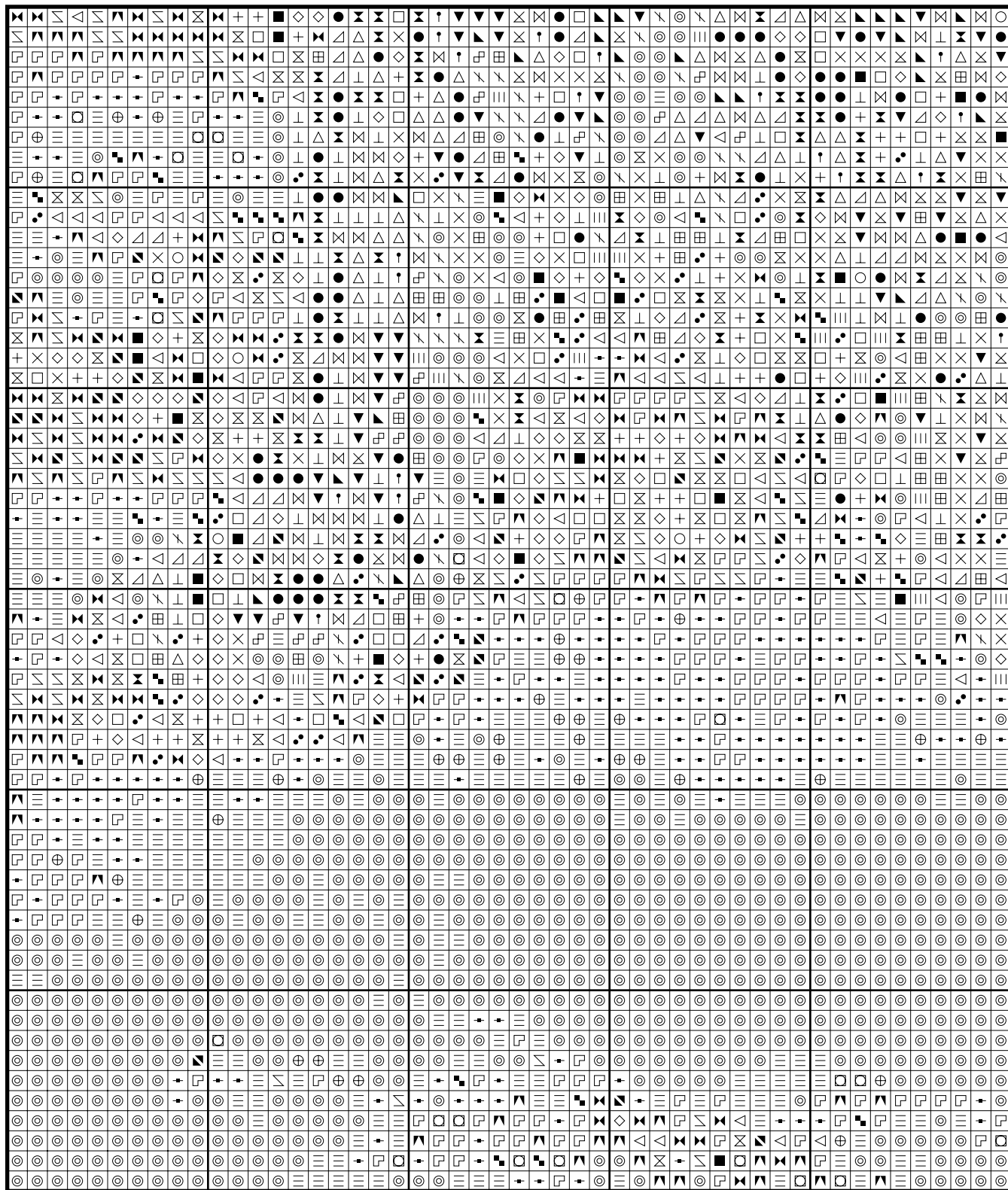
\* PLEASE NOTE: Our patterns are printed in a grid showing 10 x 10 stitches in each box. You may notice that the pages that run vertical have a maximum number of 9 rows at the top or bottom of a page. You are not missing a row or rows of stitches, this is the way our patterns print. It allows us to have larger print for your symbols.

\* You should begin at the centre of the pattern which has been marked by a circle for you. To find the centre of the pattern it is just a matter of counting the vertical and horizontal stitches and divide them by half. Where the two points meet that is the centre.

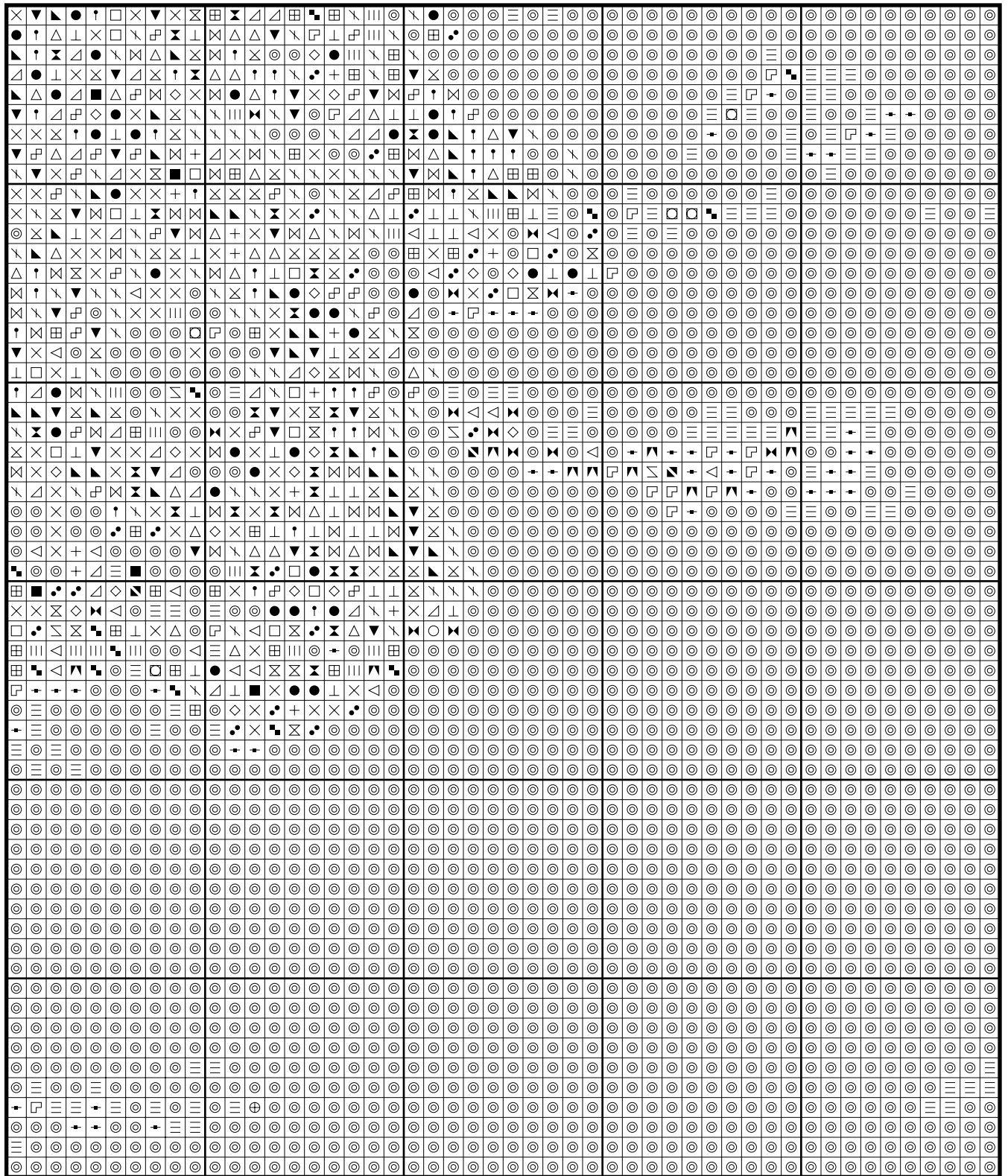
\* Pattern is for personal use only and is not to be sold, copied or redistributed in any form. Copyright of Artec Cross Stitch.

\* 230 stitches wide by 146 stitches high, 34 colours used

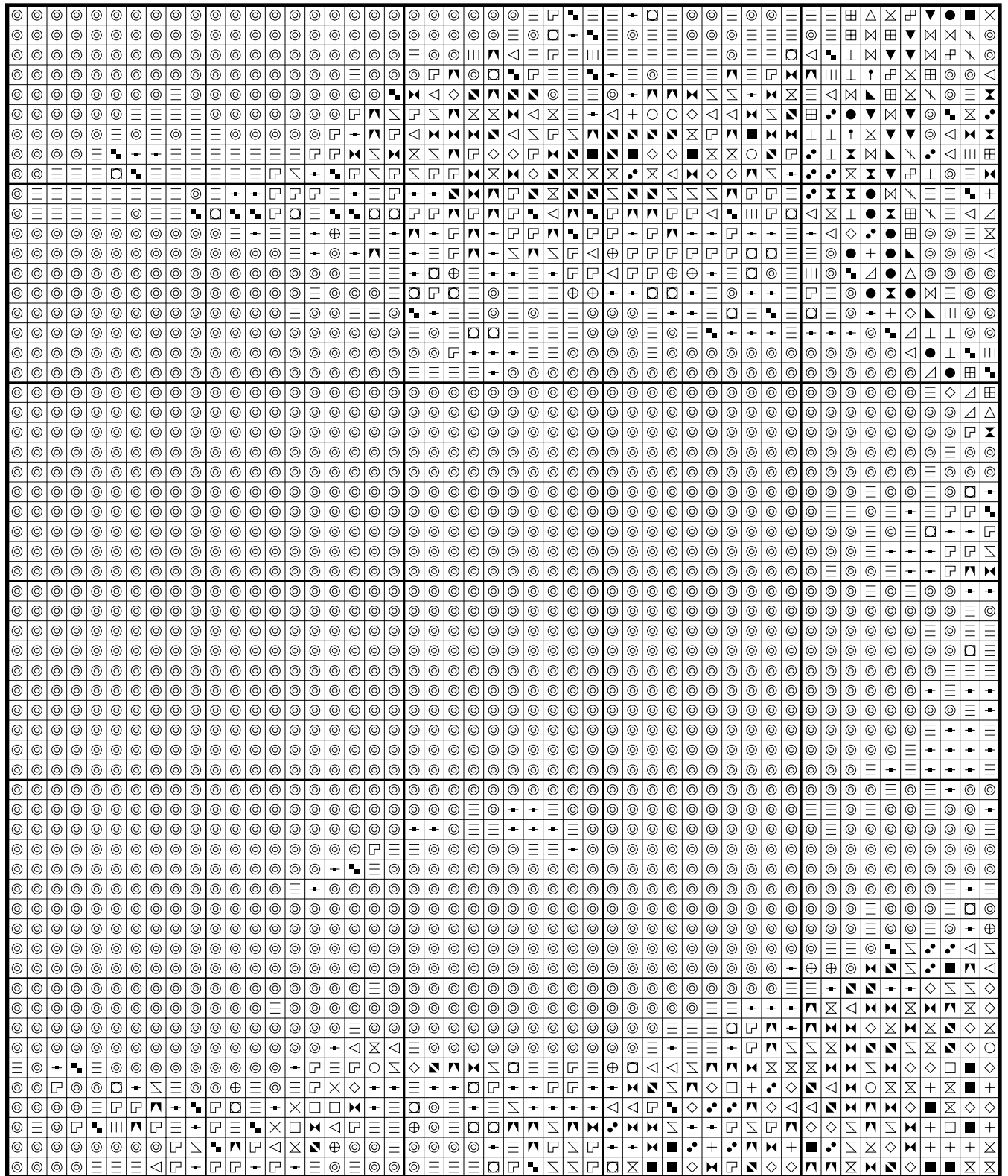
# Confrontation by Kayomi



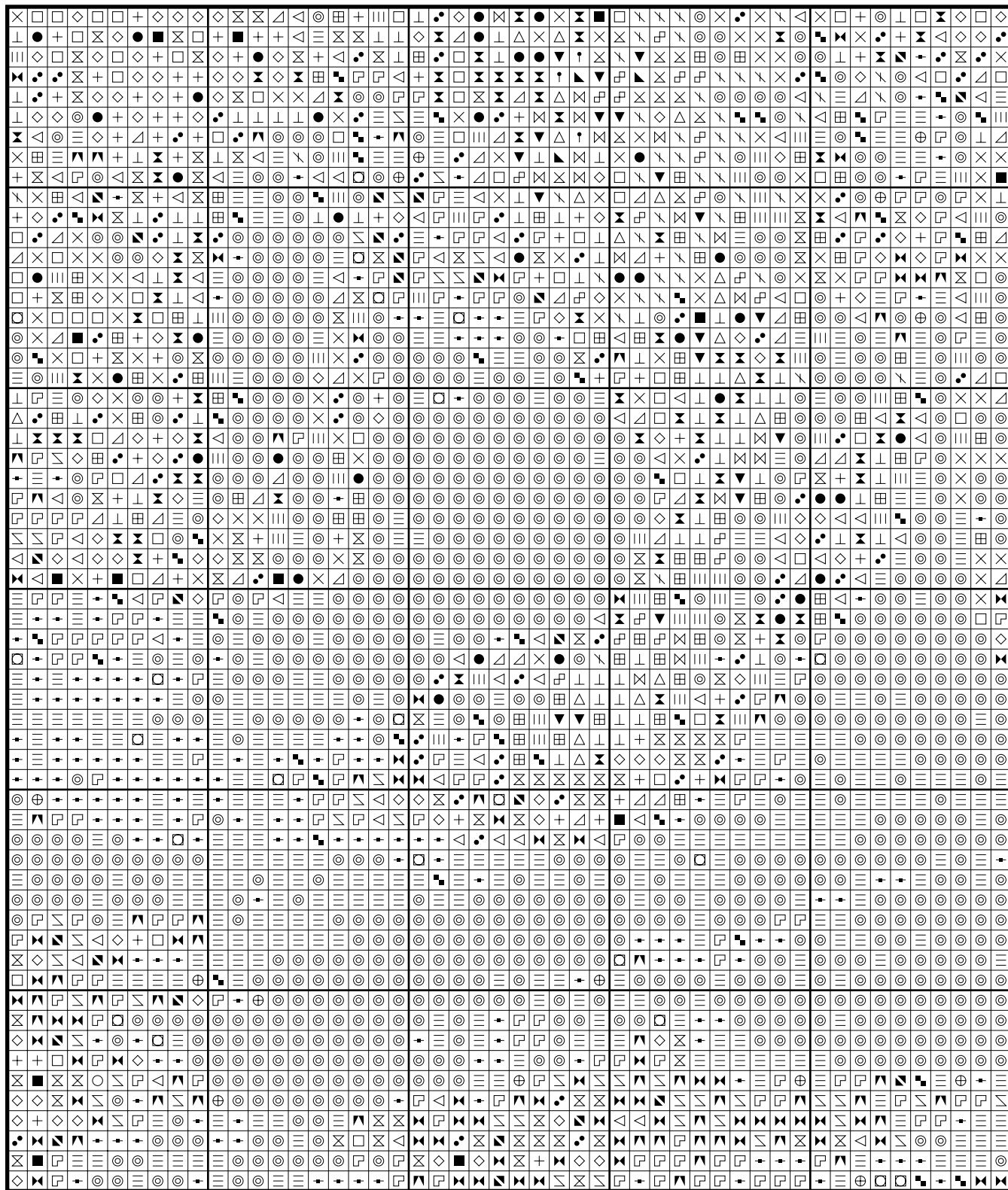
# Confrontation by Kayomi



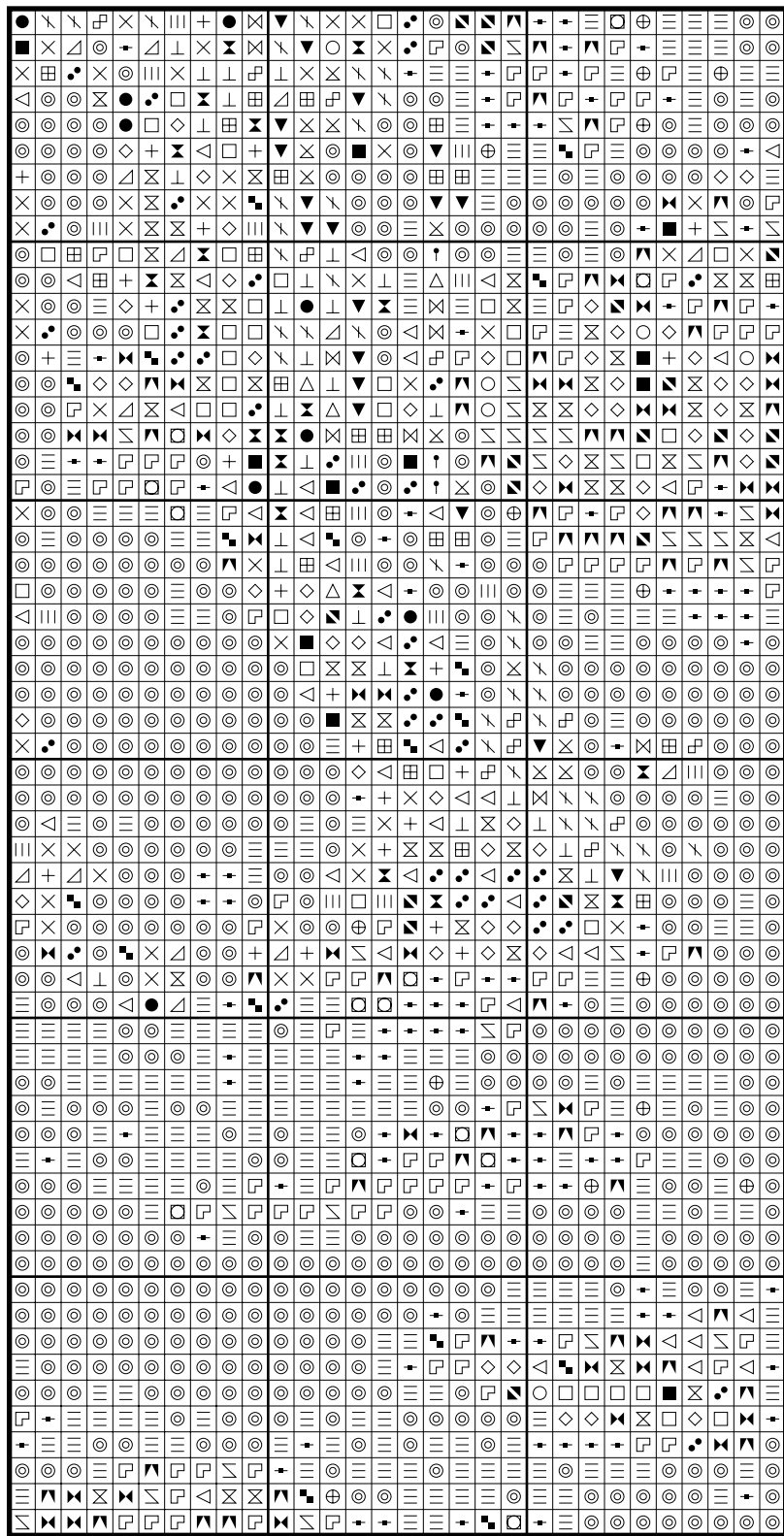
# Confrontation by Kayomi



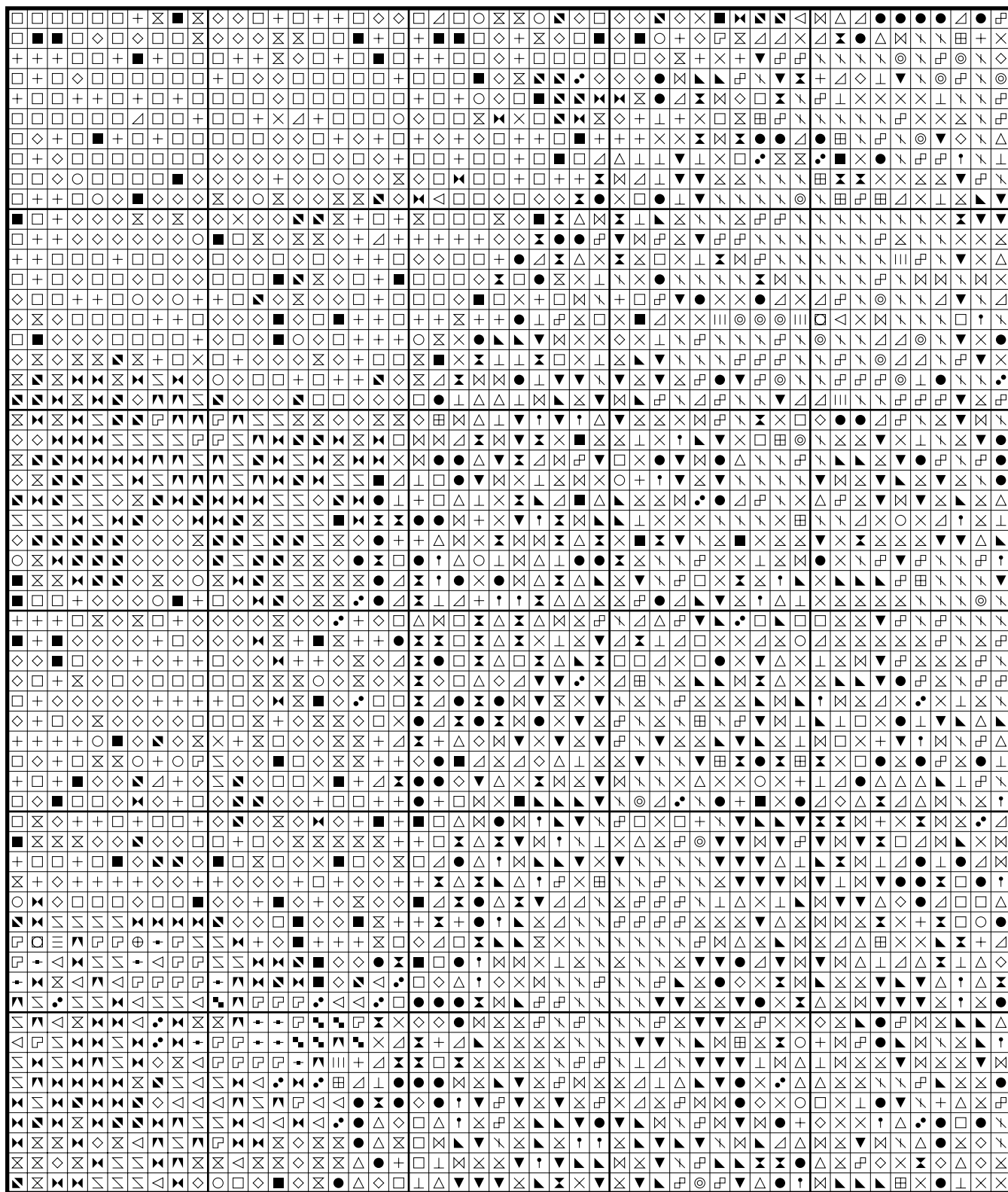
# Confrontation by Kayomi



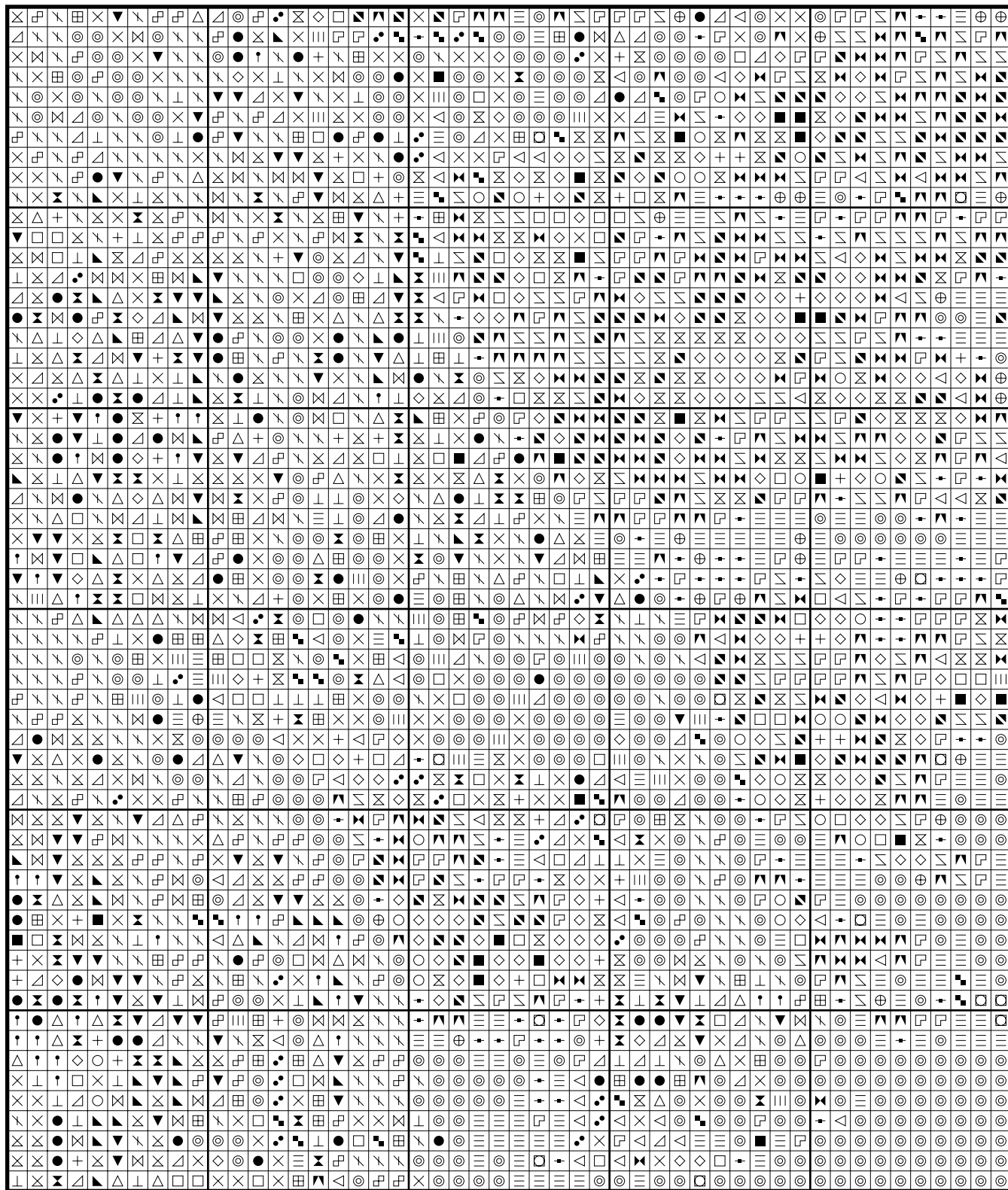
# Confrontation by Kayomi



# Confrontation by Kayomi

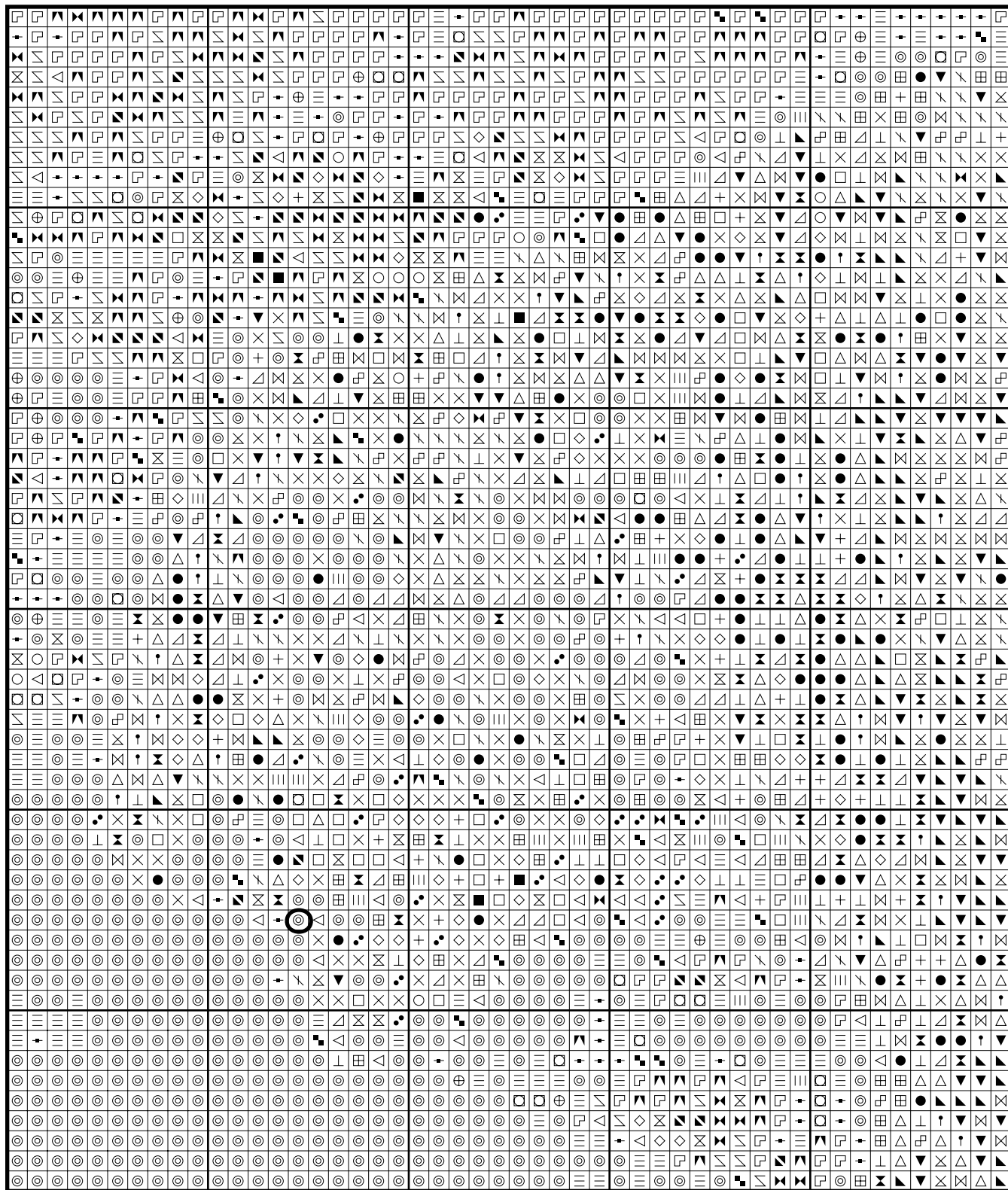


# Confrontation by Kayomi

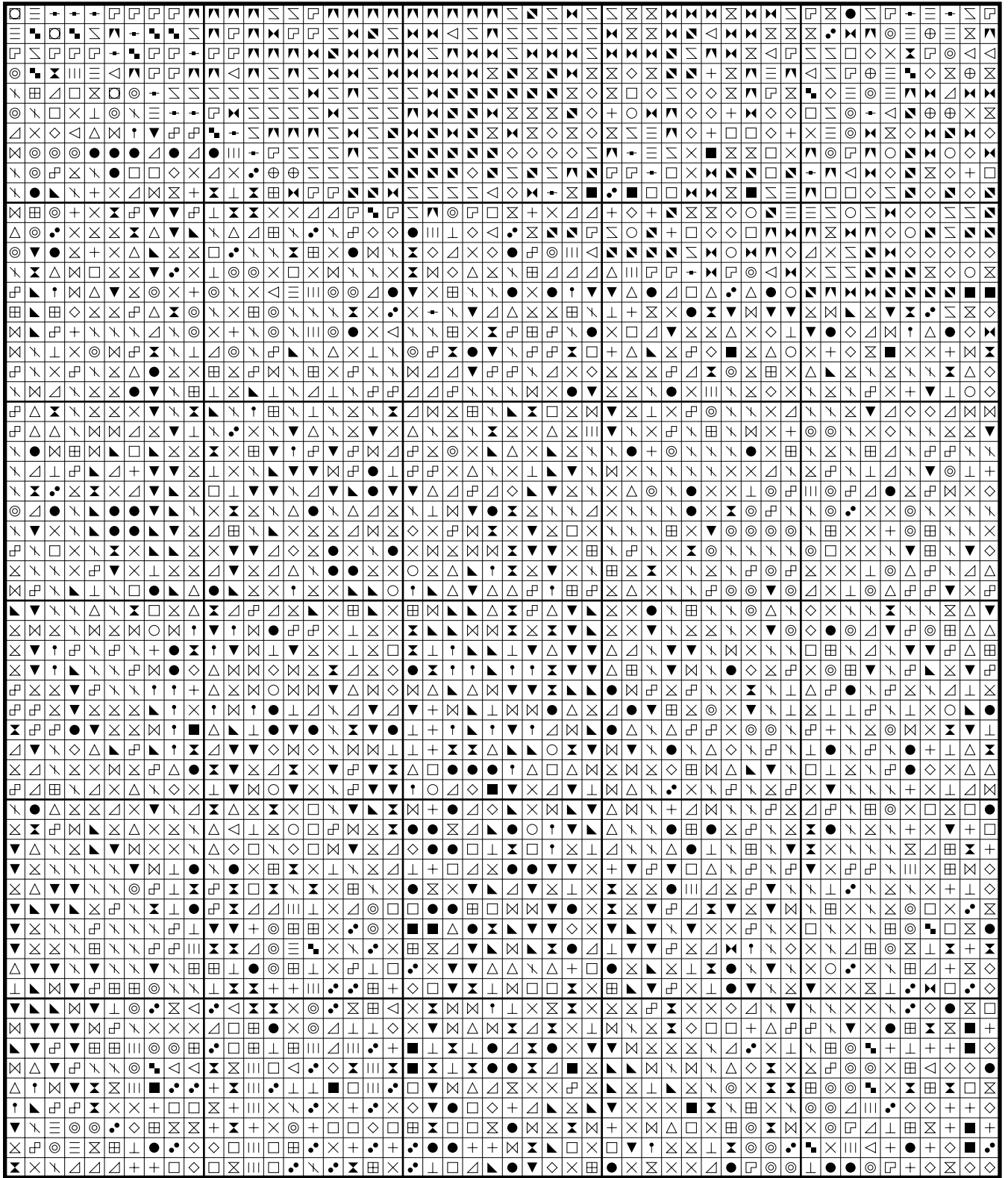




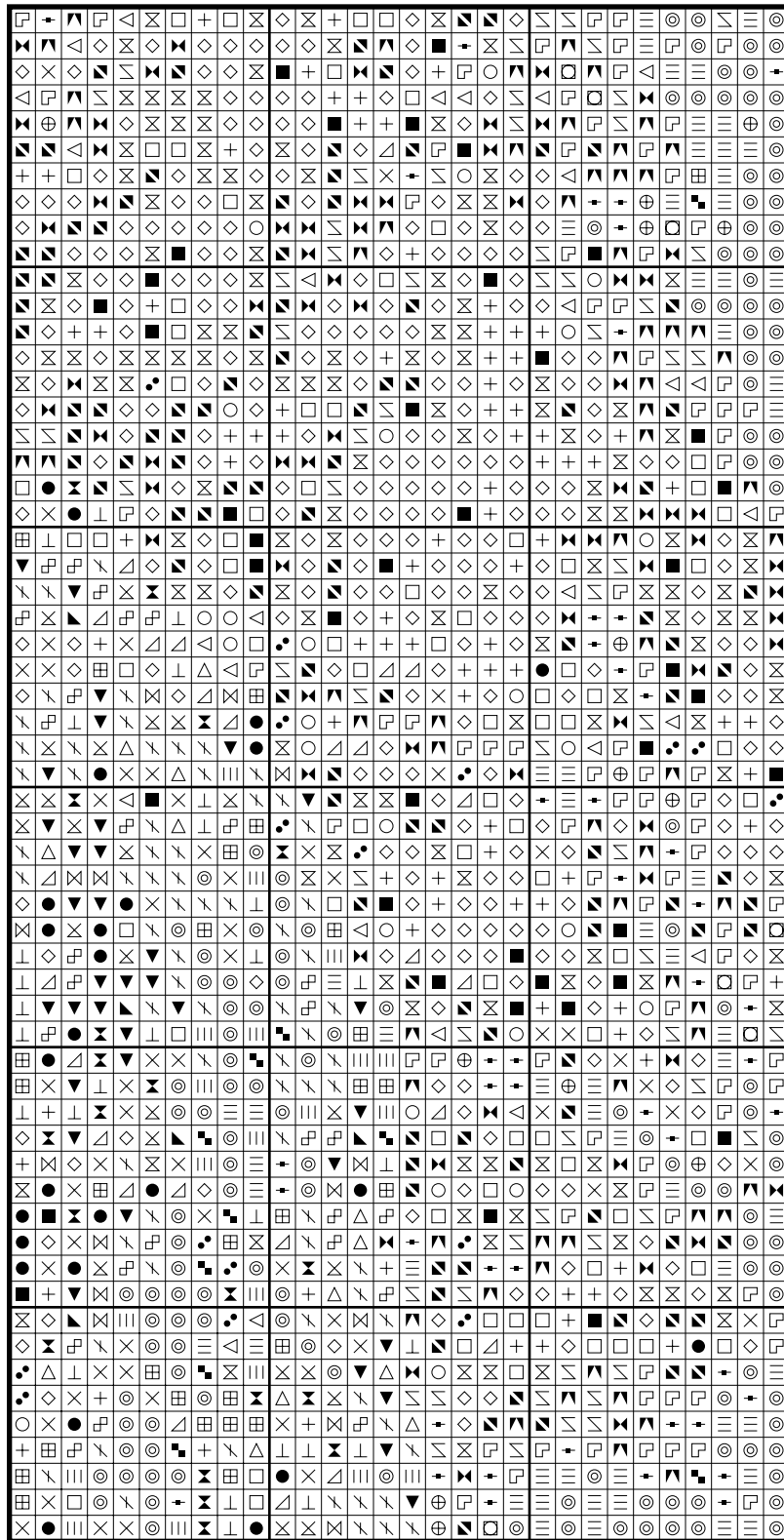
# Confrontation by Kayomi



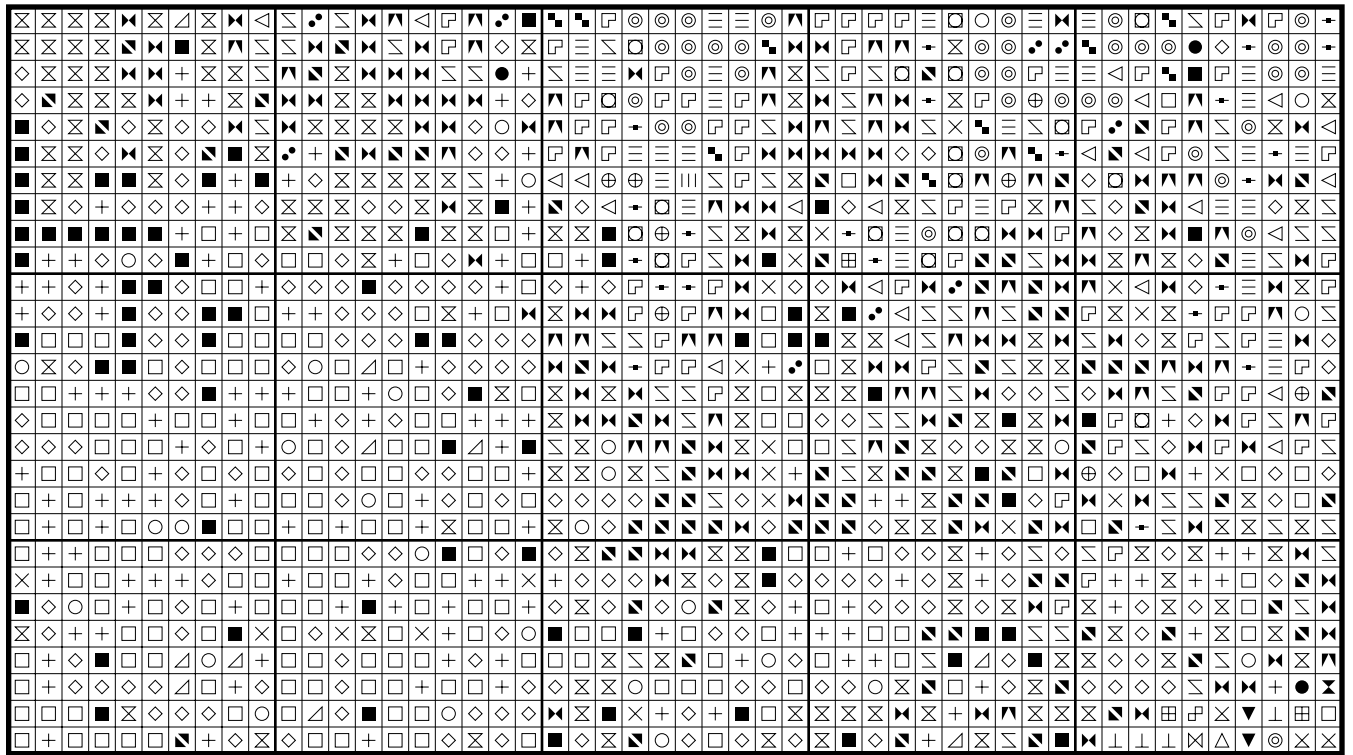
# Confrontation by Kayomi



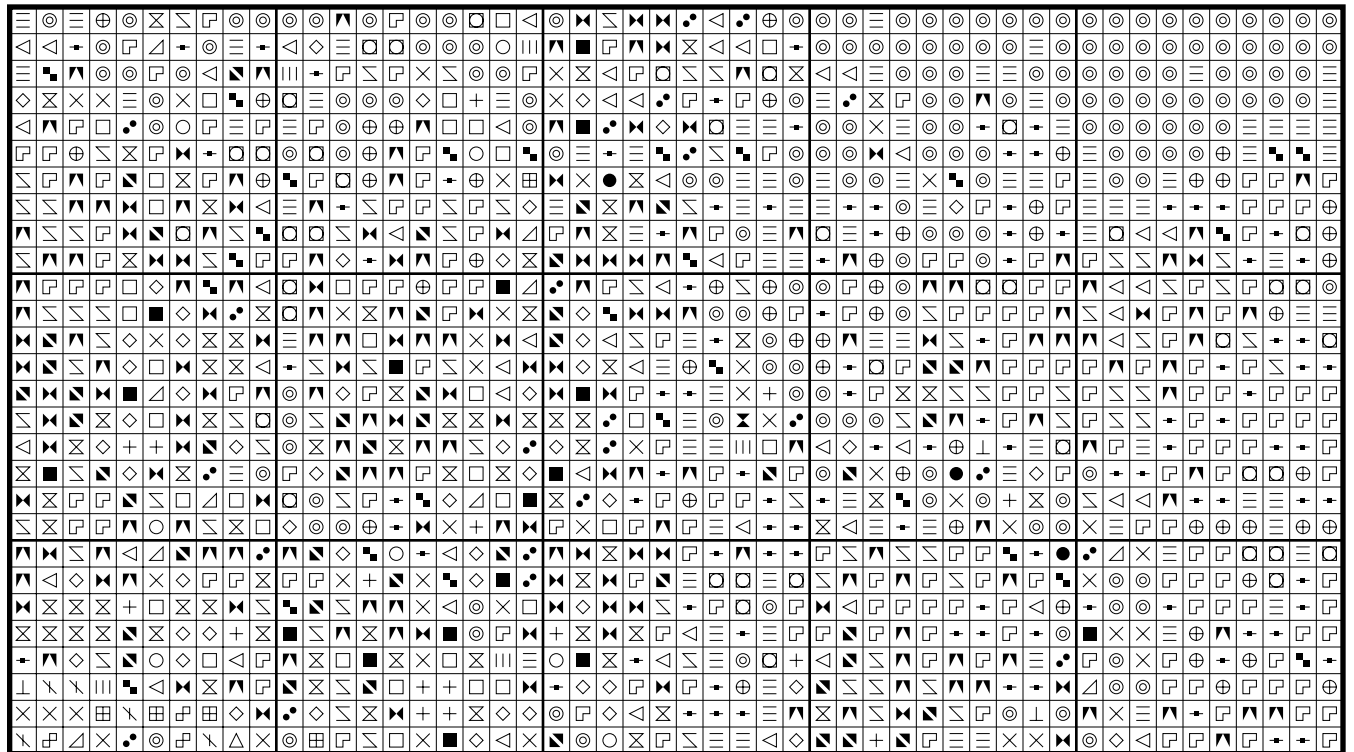
# Confrontation by Kayomi



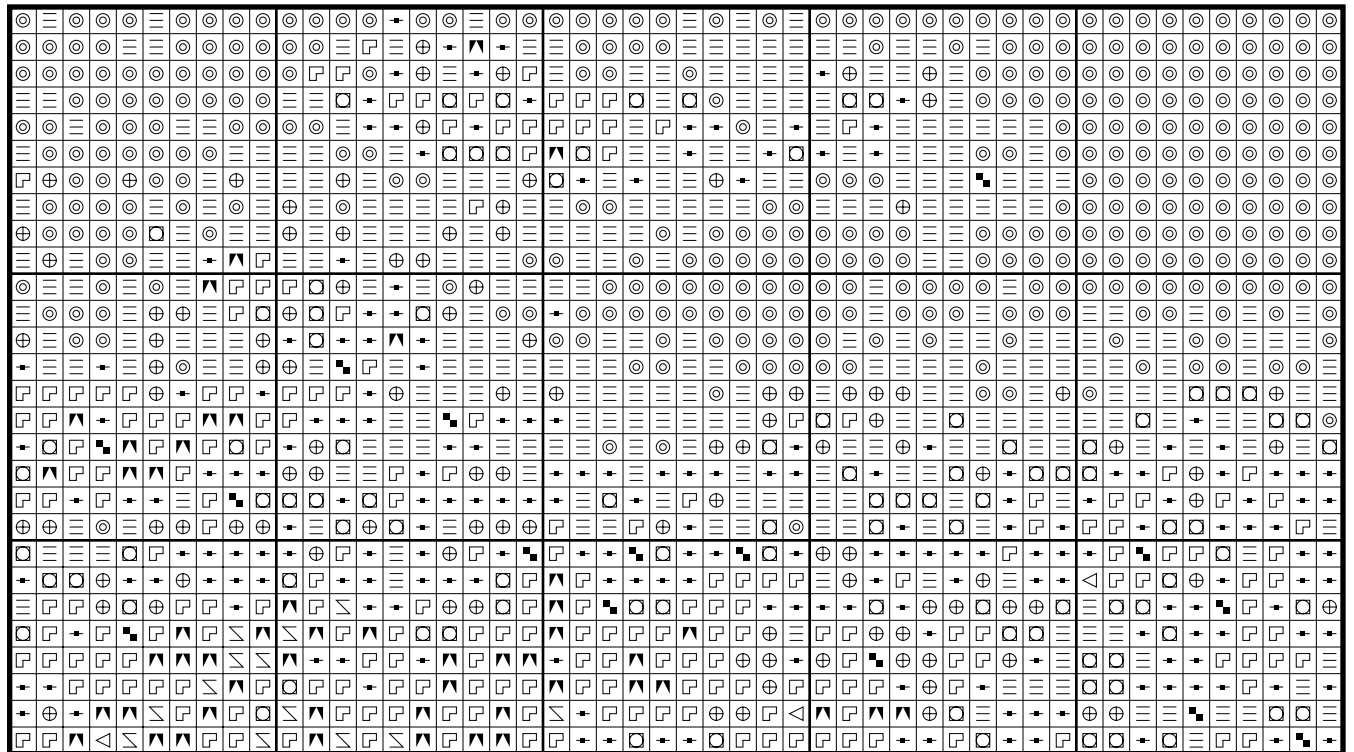
# Confrontation by Kayomi



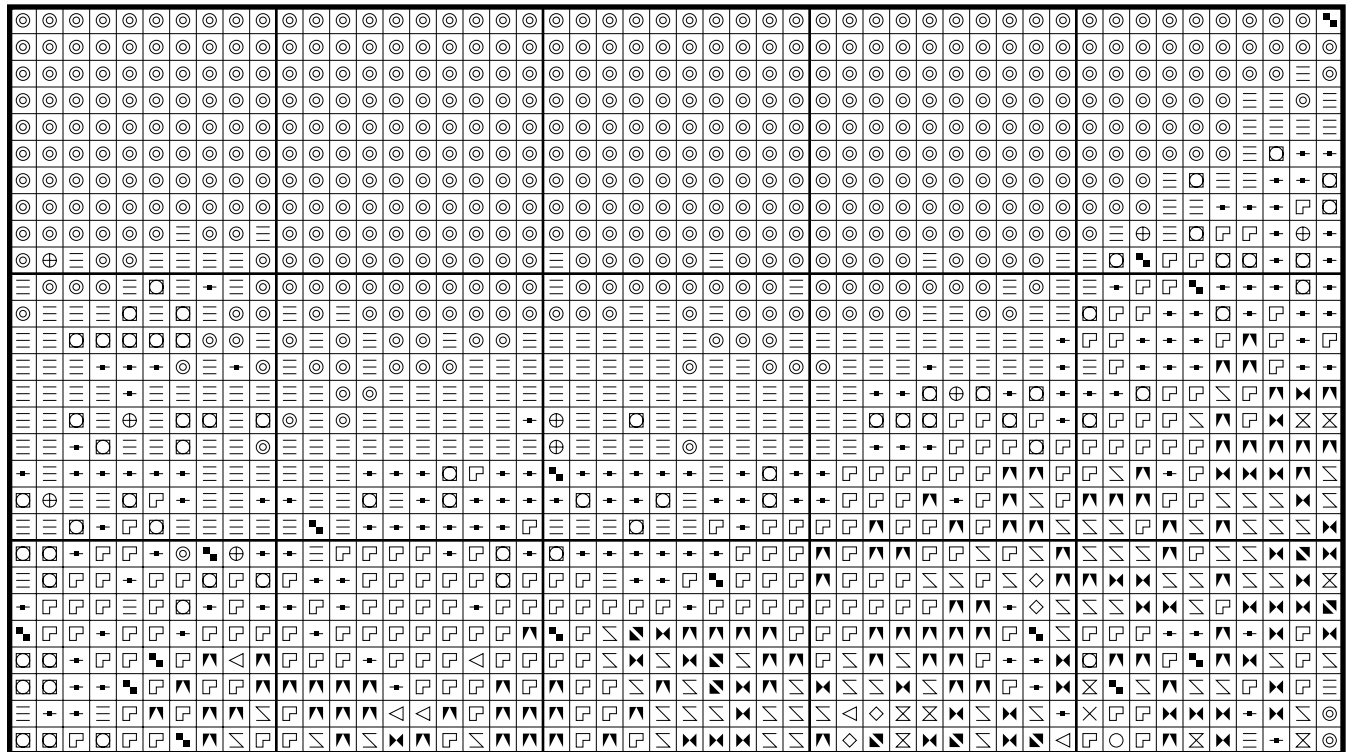
# Confrontation by Kayomi



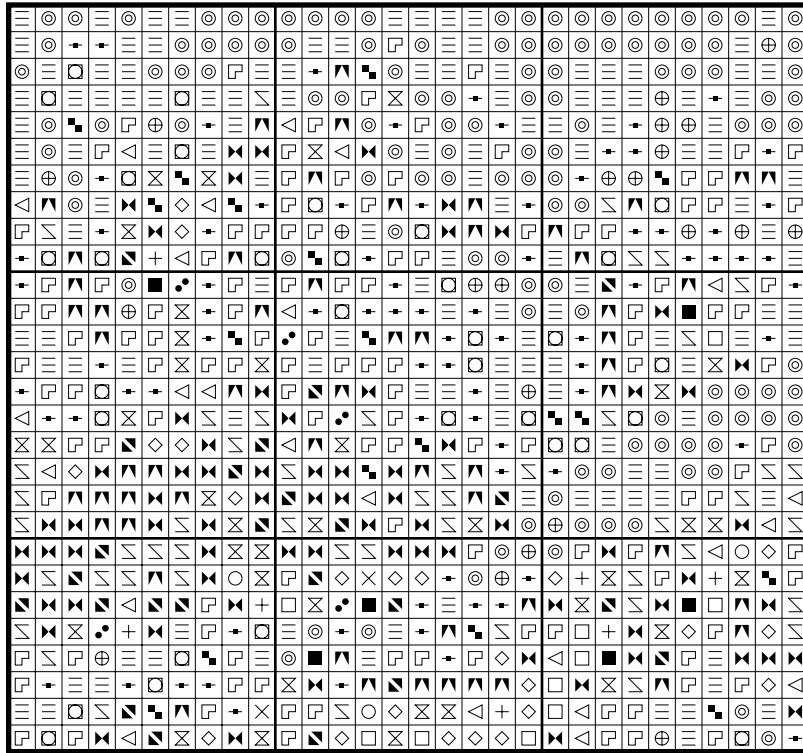
# Confrontation by Kayomi



# Confrontation by Kayomi



# Confrontation by Kayomi



\* The picture used to create this pattern has been used with the very kind permission of Kayomi the artists. More of her beautiful artwork can be found here: <http://members.aol.com/artycat/home.htm>



Color distribution - confrontation

- DMC 310 Black: 1055 stitches
- DMC 500 Very Dark Blue Green: 1003 stitches
- DMC 820 Very Dark Royal Blue: 179 stitches
- DMC 936 Very Dark Avocado Green: 799 stitches
- DMC 501 Dark Blue Green: 333 stitches
- DMC 3031 Very Dark Mocha Brown: 542 stitches
- DMC 3781 Dark Mocha Brown: 605 stitches
- DMC 924 Very Dark Gray Green: 1072 stitches
- DMC 3799 Very Dark Pewter Gray: 1508 stitches
- DMC 3807 Cornflower Blue: 691 stitches
- DMC 798 Dark Delft Blue: 975 stitches
- DMC 3346 Hunter Green: 386 stitches
- DMC 996 Medium Electric Blue: 347 stitches
- DMC 334 Medium Baby Blue: 904 stitches
- DMC 799 Medium Delft Blue: 986 stitches
- DMC 435 Very Light Brown: 212 stitches
- DMC 869 Very Dark Hazelnut Brown: 448 stitches
- DMC 610 Dark Drab Brown: 612 stitches
- DMC 783 Medium Topaz: 376 stitches
- DMC 3829 Very Dark Old Gold: 537 stitches
- DMC 3012 Medium Khaki Green: 574 stitches
- DMC 734 Light Olive Green: 674 stitches
- DMC 725 Topaz: 656 stitches
- DMC 809 Delft Blue: 343 stitches
- DMC 793 Medium Cornflower Blue: 572 stitches
- DMC 3755 Baby Blue: 1844 stitches
- DMC 794 Light Cornflower Blue: 418 stitches
- DMC 3840 Light Lavender Blue: 1477 stitches
- DMC 3782 Light Mocha Brown: 442 stitches
- DMC 834 Very Light Golden Olive: 502 stitches
- DMC 744 Pale Yellow: 1143 stitches
- DMC 3024 Very Light Brown Gray: 223 stitches
- DMC 827 Very Light Blue: 2379 stitches
- DMC 3865 Winter White: 8763 stitches

\* Generally 30 stitches will use 1 metre of DMC floss.

PATTERN LAYOUT				
12	13	14	15	16
7	8	9	10	11
2	3	4	5	6

